



a new perspective

SONY

α200

like.no.other™



DT18-70mm F3.5-5.6 (SAL1870), 1/1000 sec., F8, ISO100, Auto white balance

For every beautiful moment, a beautiful photo

At Sony, we believe everyone should be able to experience the thrill of capturing beautiful images. That's why we've developed the feature-packed new **α200** Digital SLR camera.

The **α200** makes it easier to capture images with breathtaking sharpness and clarity, vibrant colour, and exquisite detail. The newest addition to the **α** range, the **α200** helps everyone turn beautiful moments into beautiful photos – even if you're new to Digital SLR photography.

α200



See the difference in every frame



70-200mm F2.8G (SAL70200G), 1/15 sec., F8, ISO100, Auto white balance

Super SteadyShot® inside for greater handheld shooting freedom

Super SteadyShot® is an advanced image stabilisation system that helps prevent blurring caused by camera shake. Since it's built into the body of the α 200, Super SteadyShot® works with any α lens, so you can capture clear, sharp images at shutter speeds slower than would be possible without stabilisation. And that means you can enjoy the freedom of handheld shooting in situations that would normally require the use of flash or a tripod.



High-resolution 10.2 megapixel CCD for superlative image detail

At the heart of the α 200 is its exclusive Sony-developed APS-C type CCD sensor. With a resolution of 10.2 effective megapixels, this sensor is the key to data-rich, high-resolution imaging. Improved circuit design minimises signal noise: it also speeds data transfer to the optimised BIONZ image processing engine to meet the high performance requirements of the α 200. This fusion of image sensor and BIONZ engine delivers rapid response and incredible imaging quality in virtually any shooting situation.



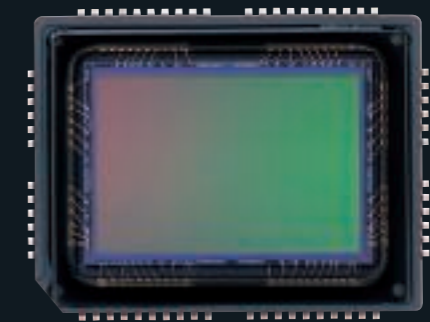
Super SteadyShot ON



Super SteadyShot OFF

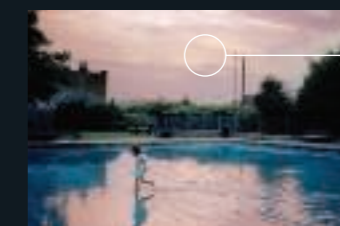


Because it's built into the camera body, Super SteadyShot provides excellent image stabilisation with all α series lenses.



Anti-dust protection for cleaner images

Every Digital SLR camera is susceptible to dust contamination when you're changing lenses. The α 200 minimises the danger of dust with built-in systems that keep the sensor clean for beautiful, unblemished images. Firstly, an anti-static coating helps prevent dust from adhering to the CCD sensor's low-pass filter and other internal components. Then to dislodge particles that do manage to reach the CCD, the sensor momentarily vibrates at ultra-high speed every time the camera is switched off.

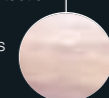


Without anti-dust protection



With anti-dust protection

(dust on sensor appears as blemish in blue sky)



Bright, vivid colour brings your images alive

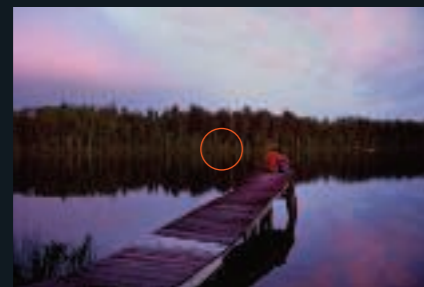


DT11-18mm F4.5-5.6 (SAL1118), 1/320 sec., F8, ISO100, Auto white balance

Speed and accuracy to catch the action



70-200mm F2.8G (SAL70200G), 1/800 sec., F5.6, ISO200, Auto white balance



Powerful BIONZ image processing engine for even more vibrant colour reproduction

The $\alpha 200$ features an enhanced BIONZ image processing engine that uses advanced Sony technologies to achieve vibrant colour reproduction with rich texture and depth. Faithful reproduction of subtle tones and shadow/highlight detail assures superb print quality. There's also extra flexibility when fine-tuning your images after shooting using Sony image editing software (included) or any other package.



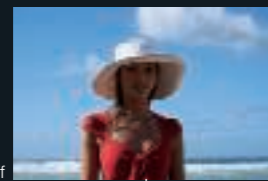
ISO 800

ISO 1600

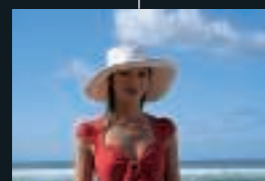
ISO 3200

ISO 3200 sensitivity setting for low-light shooting

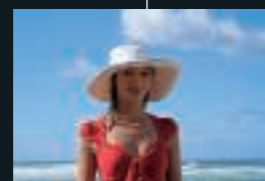
Special high-sensitivity ISO 3200 and 1600 settings allow you to take advantage of low-light photo opportunities with confidence. At higher sensitivity settings, the BIONZ engine applies high-ISO noise reduction immediately after each image is captured assuring the highest possible image quality with reduced picture noise. Together with powerful Super SteadyShot[®] image stabilisation, this means you can use faster shutter speeds in low light, greatly expanding the range of shooting situations where you don't need flash.



D-Range Optimiser off



Standard



D-Range Optimiser Advanced

Improved D-Range Optimiser for beautifully exposed images

The evolved D-Range Optimiser inside the $\alpha 200$ helps ensure better exposed images – even in tricky backlit situations where other cameras struggle to produce natural, balanced results. In Standard mode, the D-Range Optimiser enhances brightness and contrast for the whole image.

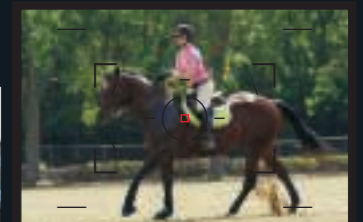
*D-Range Optimiser Advanced uses technology developed by Apical Limited.

Centre-cross 9-point AF system with exclusive Eye-Start[®] activation

The $\alpha 200$ features a centre-cross 9-point autofocus system with Sony's exclusive Eye-Start[®] activation. This automatically focuses the camera as soon as you put your eye to the viewfinder, reducing the risk of missed shots. The $\alpha 200$ delivers the quickest response time in its class, with high predictive focusing accuracy for pin-sharp results when you're shooting moving subjects. In addition, the 9-point sensor layout gives you more freedom to frame perfectly focused shots the way you want.



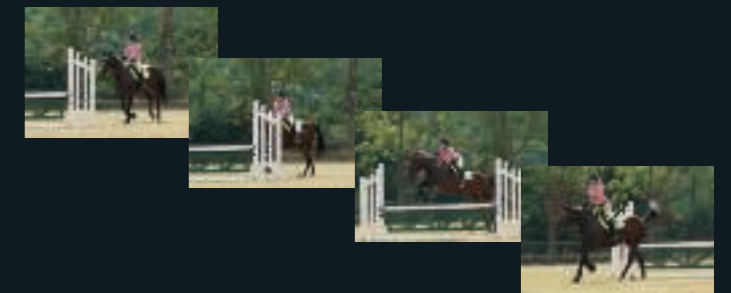
Eye-Start sensor



AF area and viewfinder displays

Continuous shooting at 3 frames per second

For sports and action photography, the $\alpha 200$ supports continuous shooting of full-resolution JPEG Fine images at 3 frames per second. Keep shooting as long as you like – the only limit is your storage card's capacity.



Versatile 40-segment honeycomb-pattern metering

Accurate exposure demands accurate light metering. The $\alpha 200$ features a 40-segment, honeycomb-pattern metering system to deliver precise readings in a wide range of shooting situations. This mode is particularly useful when photographing images with a wide contrast range. It also gives you a choice of multi-segment, centre-weighted and spot metering modes to suit your subject and lighting conditions.



Creative freedom and intuitive operation

Simple menu list for easy access to essential settings

A press of the Function (Fn) button displays the menu list, giving instant access to mode settings for flash, metering, autofocus, AF area, white balance and D-Range Optimiser. It's a faster, easier way to select and adjust frequently used functions without having to navigate through complex menus.



2.7 inch clear photo LCD monitor for instant image review

Review your photos instantly on the large 2.7 inch Clear Photo LCD screen. Zoom in to check focus on fine details. Review shooting data and histograms for on-the-spot confirmation of exposure balance and highlight/shadow reproduction. The screen automatically switches to a vertical format display when you rotate the camera for portrait-style shooting. It also switches off automatically when you put your eye to the viewfinder, eliminating distracting glare while you're framing a shot. Index view displays your images with up to 25 frames per screen, helping you to find your favourites fast.



RGB histogram display

Selectable 16:9 aspect ratio for widescreen viewing

The option of taking or capturing images in widescreen 16:9 format lets you view exciting slideshows on a widescreen TV.



Photo display on a BRAVIA widescreen television

Auto pop-up flash

In Auto and Scene Selection modes, the built-in flash pops up automatically whenever it's needed. Even when you're shooting outdoors in daylight, the flash will pop up if the alpha 200 senses that a backlit subject needs extra illumination. Flash power is rated GN12 (ISO100•m), with wide coverage to allow use with an 18mm lens.



Images on the monitor are simulated.

Easy access to basic exposure and scene modes

The easy-to-adjust mode dial on top of the alpha 200 gives direct access to Program, Aperture priority, Shutter-speed priority, and Manual exposure modes, as well as a fully-automatic Auto mode, Flash Off mode, and 6 Scene Selection modes. Scene Selection modes optimise AF, drive mode, shutter speed, aperture, and other settings for beautiful results when you're shooting portraits, landscapes, sunsets, sports, macro photos, and night scenes.



Portrait



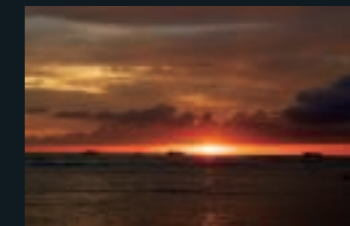
Landscape



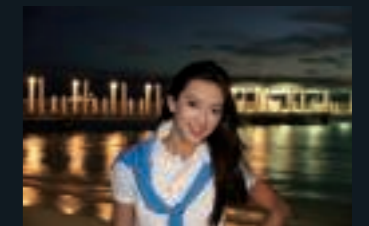
Macro



Sports action



Sunset



Night portrait / Night view

Scene Selection

Portrait	For beautiful portraits with soft background defocusing
Landscape	For crisp, vivid images of distant scenery and foreground subjects
Macro	For clear, sharp images of flowers, insects, and other small subjects
Sports action	For sharp images of fast-moving subjects in bright light
Sunset	For sunset images with rich red tones
Night portrait/ Night view	For night-time flash portraits with rich background detail; for dramatic night scenes and night-time cityscapes

Even more freedom of expression with Creative Styles

Creative Styles make it brilliantly easy to create images that match your creative mood and shooting preferences. There's a choice of Standard, Vivid, Portrait, Landscape, Night view, Sunset, Black & White, and Adobe RGB styles, and each can be adjusted for contrast, saturation, and sharpness for further fine-tuning of your creative vision (no saturation adjustment on Black & White). From expressive black and white portraits to colourful sunsets at the beach, Creative Styles settings offer a quick way to get the precise image you want.

Creative Style settings

Std.	Standard
Vivid	Vivid
Port.	Portrait
Land.	Landscape
Night	Night view
Sunset	Sunset
B/W	Black & White
Adobe	Adobe RGB



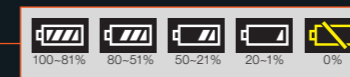
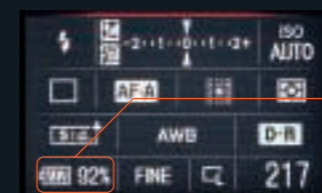
Night view



B / W

Power and versatility for extended shooting

The alpha 200 is powered by a high-performance NP-FM500H InfoLITHIUM battery that allows approximately 750 shots* between charges. An on-screen indicator gives a precise indication of remaining battery level with percentage accuracy, so there's less chance of running out of power without warning. Capable of holding two NP-FM500H InfoLITHIUM batteries, the optional VG-B30AM vertical grip extends shooting times while adding a full complement of basic camera controls for extra comfort and convenience during vertical format (portrait) shooting.



*CIPA standard test; built-in flash used on 50% of shots.



VG-B30AM



NP-FM500H



α Expand your creativity



There are no limits to expressing your creativity with the α Digital SLR system. There's a wide range of high-performance α lenses, from super wide angle, zoom, and macro, to specialist STF (Smooth Trans Focus) and reflex super telephoto models. And remember: whichever lens you use, you'll be able to take full advantage of the Super SteadyShot® image stabilisation system that's built into the body of the α200.



DT 18-70mm F3.5-5.6 (SAL1870)*

A versatile wide-angle to medium-telephoto zoom lens that incorporates aspherical and ED (Extra-low Dispersion) elements for sharp imaging. (35mm equivalent: 27-105mm)



75-300mm F4.5-5.6 (SAL75300)

A light, compact medium-telephoto to telephoto zoom that's ideal for portraits and frame-filling close-ups of distant subjects. (35mm equivalent: 112.5-450mm)



DT 18-250mm F3.5-6.3 (SAL18250)*

A powerful yet compact lens with a 14x zoom range that provides an all-in-one solution for travel and nature photography. (35mm equivalent: 27-375mm)



50mm F2.8 Macro (SAL50M28)

A compact macro lens with a minimum shooting distance of 20cm and 1:1 magnification. The circular aperture ensures superb background defocusing. (35mm equivalent: 75mm)

*DT series lenses are compatible only with Digital SLR cameras that are equipped with an APS-C sensor.

Carl Zeiss® lenses

Jointly developed by Sony and Carl Zeiss® of Germany, these premium lenses offer excellent contrast and the stunning clarity of world-famous Carl Zeiss® T* coatings.

G series lenses

Even among α lenses, G series lenses are notable for their sharp, bright imaging, advanced aspherical and ED (Extra-low Dispersion) optics, and exceptionally high build quality.

External Flash Units



HVL-F56AM

Top-of-the-line power with high-speed synchro, wireless capability and a variable-angle head for bounce flash shooting. GN56 (85mm, ISO100•m)



HVL-F42AM

A powerful, compact flash with fast recycling time. Features high-speed synchro, wireless trigger as well as bounce and zoom head. Built-in wide angle diffuser for focal lengths below 18mm. GN42 (105mm, ISO 100m)

Software



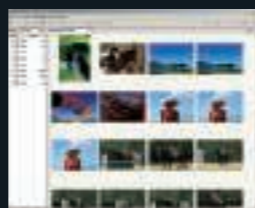
Image Data Converter SR ver.2.0

A powerful program for fast RAW data conversion that can also be used to adjust images and apply D-Range Optimiser and Creative Style effects.



Image Data Lightbox SR

A convenient tool for viewing, ranking, sorting, and comparing RAW and JPEG images. Ideal for 'best shot' selection and library management.



Picture Motion Browser

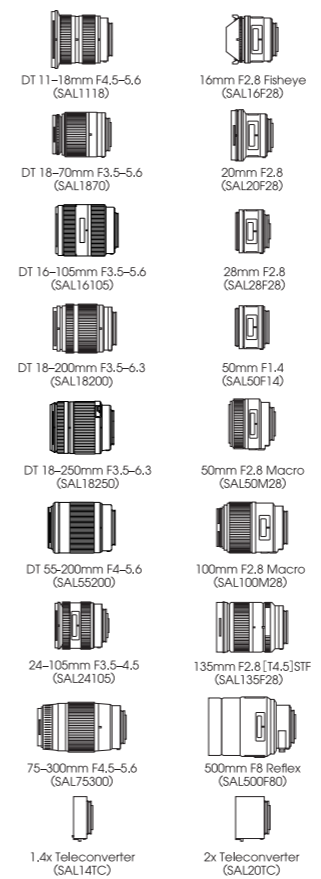
An easy-to-use application for basic photo library management and image adjustment. Features include a convenient calendar view, easy image file backup, and One-Touch Disc Burn for photo CD/DVD creation.

Controls

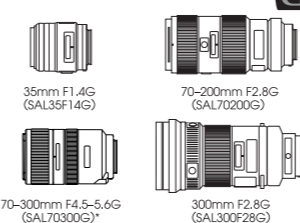


System accessories

α lens lineup

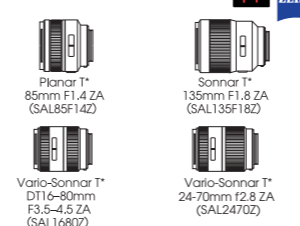


G lenses

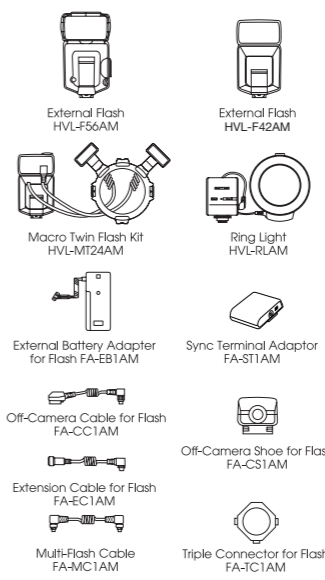


* Available in spring 2008

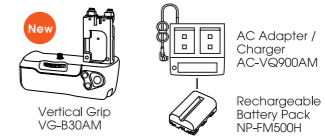
Carl Zeiss® lenses



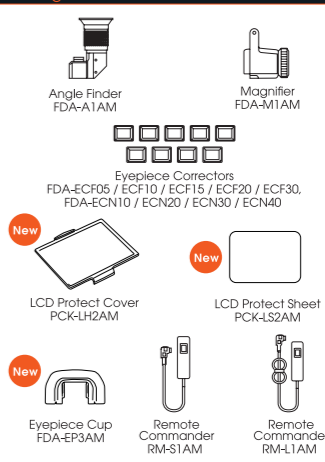
Flash & Flash accessories



Batteries / Grip & Charger



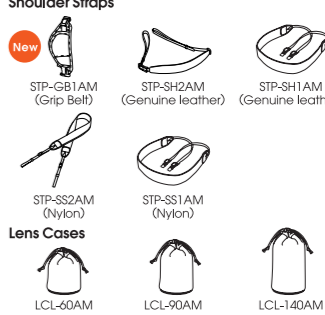
Shooting accessories



Cases & Straps



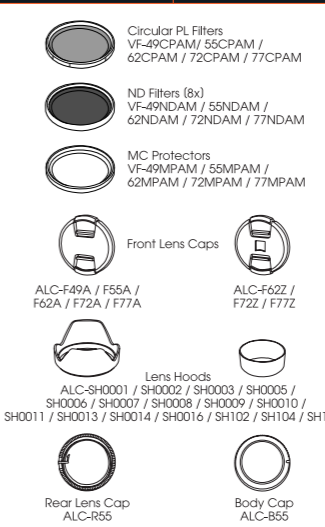
Others



α200



Lens accessories



GPS Unit Kit GPS-C31KA*
GPS Unit GPS-C31
* For use with DSLR-A200, an application update is required. Please access the URL below for more information.
<http://support.d-imaging.sony.co.jp/www/accy/gps/>





Main specifications of α 200

System	
Camera type	Digital SLR camera with built-in flash and interchangeable lenses
Lens compatibility	Sony α lenses, Minolta and Konica Minolta AF lenses
Image Sensor	
Sensor type	APS-C type (23.6x15.8mm), with RGB primary color filters
Effective pixels	Approx. 10.2 megapixels
Total pixels	Approx. 10.8 megapixels
Anti-Dust system	Charge protection coating on low pass filter and image-sensor shift mechanism
ISO sensitivity range	AUTO, 100 to 3200 (in 1-stop increments, Recommended Exposure Index)
A/D conversion	12 bits
Recording	
Recording format	JPEG (DCF2.0, Exif 2.21), RAW (Sony ARW 2.0 format), RAW + JPEG
Image size	<Aspect ratio 3:2> L size: 3872 x 2592 (10M), M size: 2896 x 1936 (5.6M), S size: 1920 x 1280 (2.5M) <Aspect ratio 16:9> L size: 3872 x 2176 (8.4M), M size: 2896 x 1632 (4.7M), S size: 1920 x 1088 (2.1M)
Image quality modes	RAW, RAW + JPEG, Fine, Standard
Media	CompactFlash (Type I, Type II), Microdrive *Separately sold "Memory Stick Duo Adapter for CompactFlash Slot AD-MSCF1" is necessary for use with Memory Stick Duo / Memory Stick PRO Duo / Memory Stick PRO-HG Duo
Noise reduction	Long exposure NR: On/Off selectable, available at shutter speeds longer than 1 sec. High ISO NR: On/Off selectable, available at ISO 1600 or higher
Color space	sRGB, Adobe RGB
Other features	Creative Style, D-Range Optimizer (Off, Standard, Advanced)
White Balance	
Modes	Auto, Daylight, Shade, Cloudy, Tungsten, Fluorescent, Flash Color Temperature / Color filter, Custom
Bracketing	3 exposures, H/L level selectable
Focus Control	
Type	TTL phase detection system
Sensor	CCD line sensors
No. of focus point	9 points
Sensitivity range	EV 0 - 18 (at ISO 100)
Modes	AF/MF selectable. AF modes: Single-shot AF, Automatic AF, Continuous AF
Focus area	Wide, Spot, Local (9 local areas selectable)
Other features	Predictive control, Focus lock, Eye-start AF, AF illuminator (Built-in flash, Range: approx. 1-5m)
Exposure Control	
Metering	Type: TTL metering Sensor: 40-segment honeycomb-pattern SPC Sensitivity range: EV 1 - 20 (EV 3 - 20 in spot metering mode), (at ISO 100 with F1.4 lens) Modes: Multi segment, Center weighted, Spot
Exposure	Modes: Program AE (AUTO, AUTO - Flash Off, P), Aperture priority, Shutter priority, Manual, Scene selection (Portrait, Landscape, Macro, Sports, Sunset, Night portrait / view) Exposure compensation: +/-2.0 EV in 1/3-stop increments Bracketing: 3 continuous or single exposures selectable, in 0.3 or 0.7-stop increments
Viewfinder	
Type	Fixed eye-level, penta-Dach-mirror
Coverage	95%
Magnification	0.83 x (with 50mm lens at infinity, -1m ⁻¹)
Dioptric adjustment	-2.5 to +1.0 m ⁻¹
Eye point	Approx. 17.6 mm from the eyepiece lens, Approx. 13.5 mm from the eyepiece frame
Screen	Spherical Acute Matte

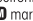
Number of recordable frames based on compression, image quality and size

Image size: L	CompactFlash Card (3.2 = 10 MB / 16.9 = 8.4 MB)					Image size: L	Memory Stick Duo (3.2 = 10 MB / 16.9 = 8.4 MB)				
	512 MB	1 GB	2 GB	4 GB	8 GB		512 MB	1 GB	2 GB	4 GB	8 GB
Standard	166 / 188	325 / 370	653 / 741	1307 / 1484	2606 / 2960	Standard	154 / 175	316 / 359	649 / 737	1283 / 1457	2575 / 2924
Fine	123 / 141	241 / 277	484 / 556	969 / 1115	1933 / 2223	Fine	114 / 131	234 / 269	481 / 553	952 / 1094	1910 / 2196
RAW + JPEG	24 / 26	48 / 51	98 / 104	198 / 210	397 / 421	RAW + JPEG	22 / 24	47 / 50	145 / 104	146 / 206	392 / 416
RAW	31 / 31	61 / 61	124 / 124	250 / 250	500 / 500	RAW	28 / 28	60 / 60	124 / 124	246 / 246	494 / 494
Image size: M	CompactFlash Card (3.2 = 5.6 MB / 16.9 = 4.7 MB)					Image size: M	Memory Stick Duo (3.2 = 5.6 MB / 16.9 = 4.7 MB)				
	512 MB	1 GB	2 GB	4 GB	8 GB		512 MB	1 GB	2 GB	4 GB	8 GB
Standard	240 / 267	471 / 523	945 / 1049	1891 / 2099	3771 / 4185	Standard	223 / 248	457 / 508	939 / 1042	1857 / 2061	3726 / 4135
Fine	185 / 208	363 / 409	727 / 819	1456 / 1641	2903 / 3271	Fine	172 / 194	352 / 397	723 / 814	1430 / 1611	2869 / 3232
Image size: S	CompactFlash Card (3.2 = 2.5 MB / 16.9 = 2.1 MB)					Image size: S	Memory Stick Duo (3.2 = 2.5 MB / 16.9 = 2.1 MB)				
	512 MB	1 GB	2 GB	4 GB	8 GB		512 MB	1 GB	2 GB	4 GB	8 GB
Standard	329 / 355	644 / 696	1291 / 1395	2584 / 2791	5150 / 5564	Standard	306 / 330	625 / 675	1283 / 1386	2537 / 2740	5089 / 5498
Fine	268 / 294	526 / 577	1053 / 1155	2109 / 2313	4203 / 4610	Fine	249 / 273	510 / 559	1047 / 1148	2070 / 2270	4153 / 4555

- * Numeric figures show the number of frame recordable with 3:2 / 16:9 aspect ratio.
- * Optional "Memory Stick Duo Adapter for CompactFlash Slot AD-MSCF1" is necessary for use with Memory Stick Duo.
- * Number of recordable frames may vary depending on the subjects and other shooting conditions.

Trademarks & Remarks

- * α is a trademark of Sony Corporation.
- * Bionz, BIONZ, Bravia BRAVIA, Super SteadyShot, InfoLITHIUM , Memory Stick , Memory Stick PRO MEMORY STICK PRO, Memory Stick Duo MEMORY STICK DUO, Memory Stick PRO Duo MEMORY STICK PRO DUO, and Memory Stick PRO-HG Duo MEMORY STICK PRO-HG DUO are registered trademarks or trademarks of Sony Corporation.
- * Microsoft, Windows, and Windows Vista DirectX are either registered trademarks or trademarks of Microsoft Corporation in the United States and/or other countries.
- * Macintosh, Mac OS, iMac, iBook, PowerBook, Power Mac, and eMac are trademarks or registered trademarks of Apple Inc.
- * CompactFlash is a registered trademark of SanDisk Corporation in the United States and/or other countries.
- * Microdrive is a registered trademark of Hitachi Global Storage Technologies in the United States and/or other countries.
- * Adobe is a registered trademark or a trademark of Adobe Systems Incorporated in the United States and/or other countries.
- * D-Range Optimizer Advanced uses technology provided by Apical Limited .
- * All other company and product names mentioned herein are used for identification purposes only and may be the trademarks of their respective owners.

- * The InfoLITHIUM  is a lithium battery pack which can exchange data with compatible electronic equipment about its energy consumption. Sony recommends that you use the battery pack with electronic equipment that have the  mark.

LCD Monitor	
Type	2.7-inch type, TFT
Total number of dots	230,400 dots
Coverage	100%
Shutter	
Type	Electronically-controlled, vertical-traverse, focal-plane type
Speed range	1/4000 to 30 sec., Bulb
Flash sync speed	1/160 sec.
Super SteadyShot® (Image Stabilization)	
Type	Image-sensor shift mechanism
Indication	Super SteadyShot scale and Camera-shake warning in the viewfinder
Compensation effect	Equivalent to approx. 2.5 to 3.5 steps in shutter speeds (varies according to shooting conditions and lens used)
Built-in Flash	
Pop-up	Auto
Guide number	12 (in meters at ISO 100)
Flash coverage	18 mm (focal length printed on the lens body)
Control	ADI, Pre-flash TTL
Flash compensation	+/- 2 EV (in 0.3-stop increments)
Modes	Auto (Flash-off), Auto, Fill-Flash, Red-eye reduction, Rear sync, Slow sync, High speed sync, Wireless
Flash bracketing	3 exposures (in 0.3/0.7-stop increments)
Recycling time	Approx. 4 sec.
Drive	
Modes	Single, Continuous, Self-timer (10 sec./ 2 sec. delay selectable)
Continuous shooting speed	Max. 3 fps (approx.)
No. of frames recordable	JPEG (L size, Fine): Until memory card is full, RAW: 6 images, RAW+JPEG: 3 images
Playback	
Modes	Single (with or without shooting information, with 4 previous / following images, RGB histogram & highlight / shadow warning), 4 / 9 / 25-frame index view, enlarged display mode (max. zoom - L size: 12 x, M size: 9.1 x, S size: 6.1 x), Image orientation, Slideshow
Interface	
PC interface	USB2.0 Hi-Speed (mass storage, PTP)
Video output	NTSC / PAL selectable
Supported OS Environments	
Windows	Microsoft Windows 2000 Professional / XP Home Edition / XP Professional / Vista Home Basic / Vista Home Premium / Vista Ultimate / Vista Business / Vista Enterprise
Macintosh	Mac OS X (v. 10.13 or later)
Print	
Compatible standards	Exif Print, Print Image Matching III, PictBridge
Power	
Power source	One Rechargeable Battery Pack NP-FM500H * NP-FM55H for DSLR-A100 is not usable.
External power source	AC Adapter / Charger AC-VQ900AM (optional)
Battery performance	Approx. 750 shots (CIPA standard)
Others	
Dimension (WxHxD)	Approx. 130.8 x 98.5 x 71.3 mm (5-1/4 x 4 x 2-7/8 in.) (excl. protrusions)
Weight	Approx. 532 g (1 lb 2.8 oz) (w/o batteries, memory card, accessories)
Operating temperature	32 - 104 degrees F (0 - 40 degrees C)

Specifications are based on the information available at the time of printing and are subject to change without notice.

System requirements of bundled software

Image Data Converter SR ver.2.0	
Microsoft Windows 2000 Professional SP4 / Windows XP SP2* / Windows Vista*, Mac OS X (v. 10.4 or later)	
Image Data Lightbox SR	
Microsoft Windows 2000 Professional SP4 / Windows XP SP2* / Windows Vista*, Mac OS X (v. 10.4 or later)	
Picture Motion Browser	
Microsoft Windows 2000 Professional SP4 / Windows XP SP2* / Windows Vista*	

- * 64-bit editions and Starter (Edition) are not supported.
- Note: Factory pre-installed. We do not guarantee proper operation in the upgraded environment of the OS stated above.